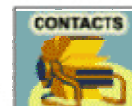
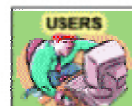
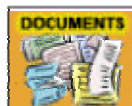




CRABTREETM PRO 5

SINGLE-USER INSTALLATION GUIDE



CRATE PRO 5 SINGLE-USER INSTALLATION GUIDE

© Copyright 2003, Deploy Tech Services, LLC. All rights reserved.

Information contained herein is deemed accurate but is not guaranteed.
See the actual software for final features and functionality.

If you find any errors, please let us know at info@cratepro.com

CRATE PRO 5 SINGLE-USER INSTALLATION GUIDE

Table of Contents

- Table of Contents i**

- 1 Preparation 1**
 - 1.1 Clearing Temporary Files.....1
 - 1.1.1 How to do it..... 1
 - 1.1.2 The Result 1
 - 1.1.3 Ongoing Maintenance 2
 - 1.2 Defragmentation.....2
 - 1.2.1 How to do it..... 2
 - 1.2.2 The Results..... 3
 - 1.2.3 Ongoing Maintenance 3

- 2 FileMaker Pro..... 3**

- 3 Installing Crate Pro..... 3**

- 4 Launch & Set up Crate Pro..... 4**

- 5 About Support from Deploy Tech 4**

- 6 Backing-up 4**

CRATE PRO 5 SINGLE-USER INSTALLATION GUIDE



1 Preparation

Just as building a house starts with laying a good foundation, so it goes for installing a mission critical software such as Crate Pro™. There's a common term in the computer industry: 'Garbage In-Garbage Out.' In other words, your program is only as good as what you put into it and will only work as good as your computer will allow it to.

Start by assuring your PC has a tidy hard drive.

1.1 *Clearing Temporary Files*

Through the course of normal use, computers accumulate temporary files. Some of these are left over from program installations and some can be the results of a previous computer crash.

1.1.1 *How to do it*

Empty your recycle bin by right-clicking on the icon on your desktop then selecting Empty Recycle Bin.

If you have recently installed any new programs on this computer; have had a recent crash; or if the computer has been running more than one day, shutdown and reboot the computer.

If you have a regular backup routine, do a backup. It is VERY RARE that clearing out temp files will have a negative impact on your computer, but doing a backup will provide a little extra security. If you do not have a regular backup routine; again remember, that a problem being created here is rare, so

From your Start Menu, select Search

In the search field, type in **.tmp*

Set your search criteria to only search the hard drive you will be installing to.

Set your search criteria to assure Windows searches inside system and hidden folders. Different versions of Windows handles this differently but the option should be either on the main menu at the top of the screen or near where you entered the *.tmp to search.

Perform the search.

When the search is complete, delete all the found files. This will send them to the Recycle Bin.

Shutdown and reboot your computer again. (Don't skip this second reboot!)

1.1.2 *The Result*

Any temporary files that were deleted are now in your Recycle Bin. If you have any unusual problems with your computer within the next couple of days, restore the deleted files by opening the Recycle Bin, highlight all the files then selecting Restore.

CRATE PRO 5 SINGLE-USER INSTALLATION GUIDE

1.1.3 Ongoing Maintenance

Temporary files can interfere with normal computer operations. By not cleaning out temporary files after a crash, you could cause the crash to reoccur over-and-over again. Running a database program on a PC such as Crate Pro when it crashes, can result in damage to the database as well as lost data and downtime.

Anytime a PC crashes, you should restart it and one-by-one; reopen all programs and files that were open during the crash. After opening one, then reclose it. Doing so will allow the programs to utilize any crash recovery that it may have available to that program. After opening and closing each program and file, then reboot your computer a second time. After the second reboot, delete any temp files.

1.2 Defragmentation

Defragging your hard drive should be done on a regular basis. In the normal course of computer use, the files on your hard drive get broken up. When the computer stores a file, it looks for the first open space on the hard drive and start there. If the area where it started isn't big enough, it continues storing at the next available space and simply makes a note to itself that it did this. This is a simplistic explanation but in reality, this method of storage is done thousands and thousands of times on your hard drive. This file fragmentation slows down the computer and if defragmentation is not regularly performed can cause FileMaker® and other network programs to crash resulting in possible data loss.

1.2.1 How to do it

NOTE: Your screens or the steps may vary slightly from those presented here.

You should start this process at the end of a day

From your desktop, double-click on My Computer.

Right-click on your C:\ drive or the drive you will be installing to.

Select Properties from the bottom of the menu.

Click on the Tools tab

Click the Defragment Now... button

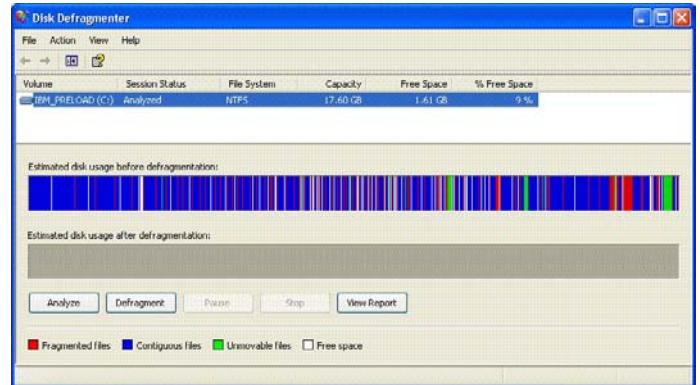
NOTE: You should have at least 20% of your hard drive space free to defragment the drive. If you get the following message, you should delete some files from your hard drive or skip ahead to section 1.2 then defragment your hard drive afterward.



When the Defragment window appears, click the Defragment button. There is no need to do an analysis.

CRATE PRO 5 SINGLE-USER INSTALLATION GUIDE

This is an example of a dangerously full hard drive that will not defragment properly.



1.2.2 The Results

After a successful hard drive defragmentation you should see little or no defragmented files. If you see more than a little, consider removing some files from the hard drive and running the defragmentation again.

1.2.3 Ongoing Maintenance

Hard drive defragmentation should be run every month or so. If a PC is used more than average or if your hard drive is consistently near 80% full, consider doing it every week.

Even if there is little defragmentation to occur, doing so will refresh the bits (strengthen the electrons) assuring longer data retention.

2 FileMaker Pro

The single-user version of Crate Pro does not require FileMaker Pro. If you later decide to upgrade from the single-user version to the multi-user version of Crate Pro, you will receive a copy of FileMaker Pro at that time.

3 Installing Crate Pro

Insert the Crate Pro CD. The Crate Pro installer should start. If it doesn't start automatically, navigate to the CD drive using Windows Explorer and double-click on the Setup file.

When asked if you want to install a Single-User or a Client, select Single-User.

Note: Crate Pro will not allow multi-user access unless registered for multi-user.

CRATE PRO 5 SINGLE-USER INSTALLATION GUIDE

4 Launch & Set up Crate Pro

Double-click on the Crate Pro icon on your desktop or in the Program Files menu.



Crate Pro will walk you through a Setup Wizard to assist you in your initial setup.

At the end of the Setup Wizard in Crate Pro you will have the opportunity to print more documentation including an Operating Manual and a Getting Started Guide. These, along with other documents will assist you in further setting up your Crate Pro environment.

5 About Support from Deploy Tech

Deploy Tech strives to provide you with the best support possible. If you have any problems installing Crate Pro, please let us know right away. Most problems are fast and easy to correct.

The best way to contact us is by e-mail. If you setup Crate Pro to send e-mails you can use Crate Pro to send your e-mail along with detailed support information that will assist us in responding to you as quickly as possible. To send a support e-mail, go to the Help file and click on the Support tab. From there you can select the Send Tech Support E-Mail button then enter your e-mail in the supplied window.

If you did not setup Crate Pro to send e-mails, you can send a regular e-mail to support@cratepro.com.

6 Backing-up

Regular backups are a critical part of any computer solution but it is even more critical with database programs. Assure you have some method of backing up Crate Pro such as backup software and a tape backup drive or a second hard drive. At minimum you should have a CD burner and burn a copy of Crate Pro to CD every week or less. Crate Pro will install in the C:\Deploy Tech folder.

In the event that you have backed up Crate Pro to a CD and need to restore, the CD burning process may have locked the files and make them not modifiable. To unlock the files after restoring them, select the files in Windows Explorer then right click on them. From the menu, select Properties then assure Read Only is not selected.